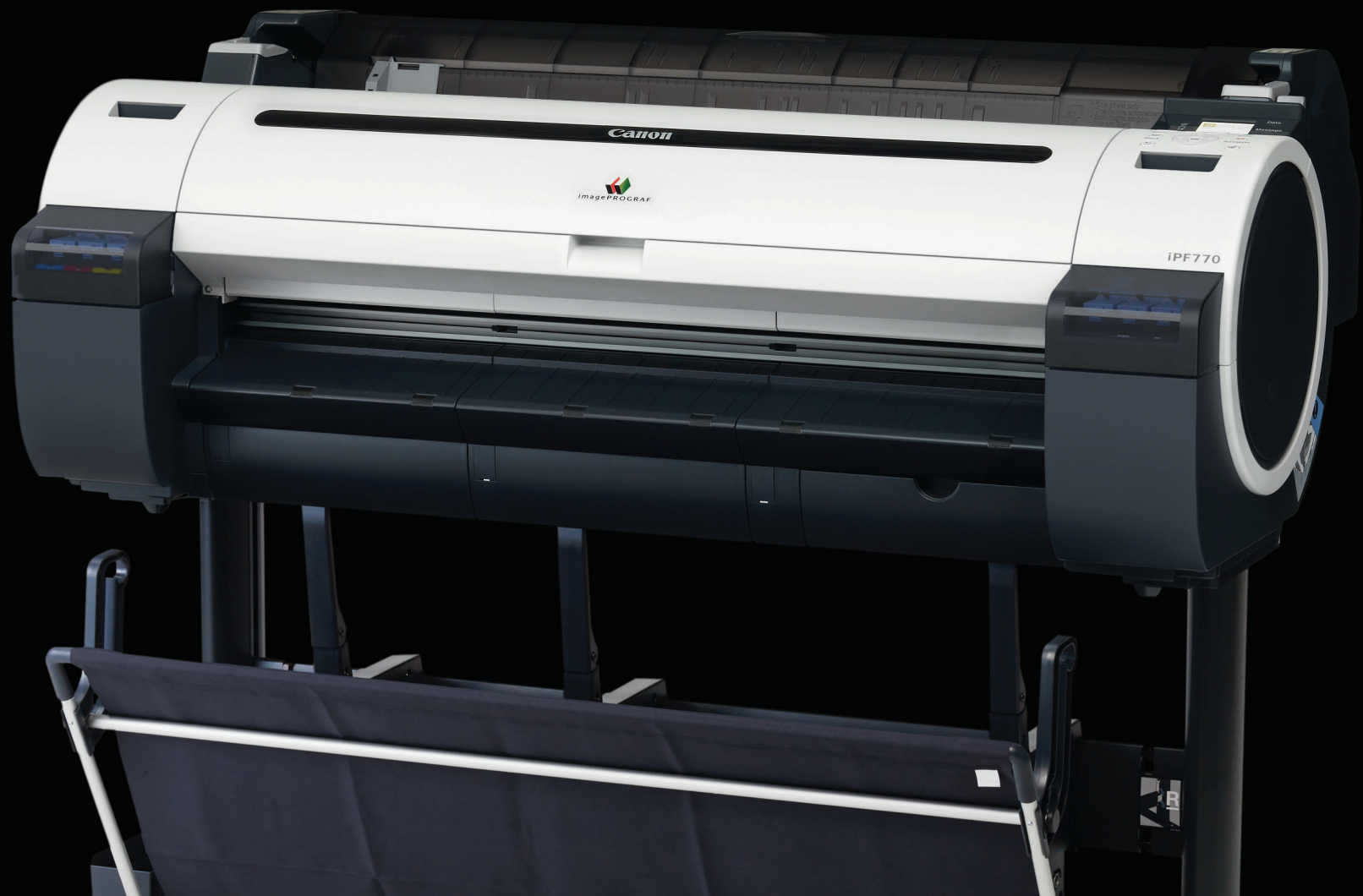




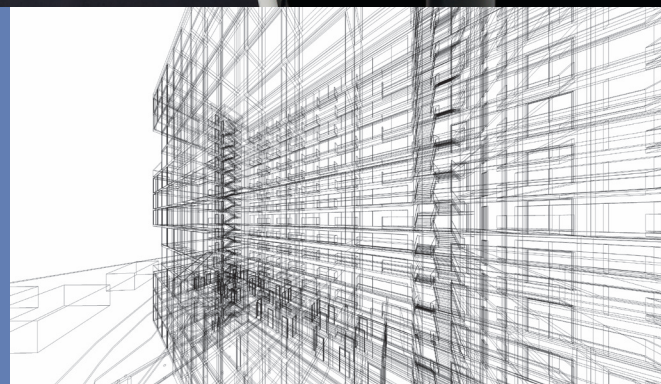
imagePROGRAF



imagePROGRAF
iPF770/670



**TECHNICAL
DOCUMENTS**
LARGE-FORMAT PRINTING





Introducing the 36-inch wide imagePROGRAF iPF770 and 24-inch iPF670 Large-Format Printers.

Affordable printers for those looking for an entry-level, multipurpose, large-format printer.



iPF670 shown with stand

Designed for low-volume printing, these printers offer affordable solutions that can support a variety of applications including: posters, presentations, technical documents, drawings, company announcements, enlargements, and more.

FEATURES

AVAILABLE WORKFLOW SOLUTIONS

- Mobile printing app*
- Direct Print & Share**
- PosterArtist Lite
- Print Plug-in for Microsoft Office®, and more!

INK

- A reformulated Magenta ink
- A Sub-Ink Tank System

PRINT SPEED

- Capable of producing an A1 (23.39" x 33.11") print, in about 25 seconds on the iPF770▲

DESKTOP DESIGN

- iPF670 model available without stand

▲A1 Plain paper cut speed: Fast mode

imagePROGRAF

FEATURES

INK SYSTEM

- The 5-Color ink set found in the imagePROGRAF iPF770 and iPF670 large-format printers is ideal for technical applications, posters, and office signage. This ink technology uses four highly colorfast dye inks for producing bold, expressive color, plus two channels of pigment matte black ink for printing precise lines, smooth curves, and small text on technical and office documents. Included is a reformulated magenta ink, that helps produce a wider color gamut in the red and orange spectrums, compared to previous models.

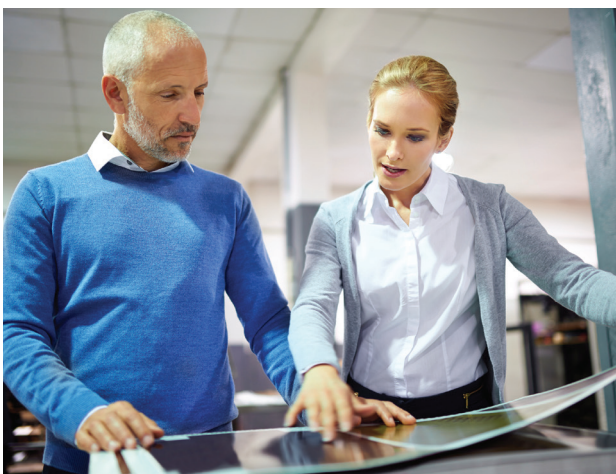
- The printer's sub-ink tank system allows for all of the available ink in a tank to be used before needing to replace it, helping eliminate any wasted ink. The empty tanks can also be replaced without stopping a print job.

LOW OPERATIONAL COST

- A number of important built-in features help minimize ink consumption, media waste, and maintenance costs to help reduce total cost of operation. These features include Economy Print Mode for low cost per print, auto-rotation, and nesting to minimize media waste.

SPACE SAVING DESIGN

- The printers have a small footprint with fully front-accessible operation for flush wall installation, to fit into almost any environment. There is also an assisted top-loading feature for easy media loading.



VERSATILITY

Enhancements to the line-up of imagePROGRAF software solutions can help improve printing workflow and management.

imagePROGRAF Print Utility*

This iOS-based app allows users to print PDF files wirelessly, directly from an iPad® to an imagePROGRAF printer.

Direct Print & Share 2.0**

Canon's cloud-based portal solution allows for the sharing and printing of JPG, TIFF, PDF, and HP-GL/2 files from almost anywhere in the world. Also, shortcut-printing capability has been added for drag-and-drop printing (PC only).

PosterArtist Lite

Poster creation software gives you all the tools you'll need to design and output impressive large-format signs and banners (PC only).

Print Plug-in for Microsoft Office

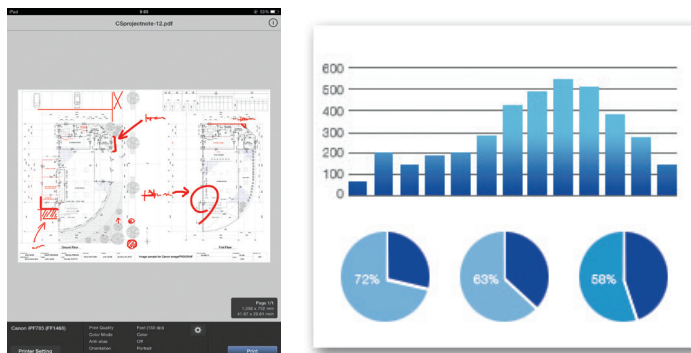
Allows for users of any skill level to print posters or banners directly from Microsoft® Excel®, PowerPoint®, and Word®.

Accounting Manager

Help keep track of costs and allocate consumable expenses to projects easily. This management tool allows you to track print jobs by user to calculate ink and media (PC only).

imageRUNNER Enlargement Copy

Scan-to-Print using an imageRUNNER or imagePRESS device to an imagePROGRAF iPF770/670 printer (PC only).



* Available at the App StoreSM. Compatible with iPad® 2 or later, running iOS 6.1 or later. Data charges may apply. Printed output will be the same size as original file. Mobile device and large-format printer must utilize the same wireless network. Printer must be connected to same router that the mobile device is connected to via wireless capability. Wireless printing requires a working network with wireless 802.11b/g or n capability. Wireless performance may vary based on terrain and distance between the printer and wireless network clients. In order to print from imagePROGRAF Print Utility, user must open their PDF file in another, supported iPad app. Then, the user would select "Open In" and choose the Print Utility app.

** Version 2.0 is available for download at www.usa.canon.com/download. Your server must be compatible with a webDAV enabled cloud account, including but not limited to, Google, Carbonite or Rackspace, to take advantage of the cloud functionality. Storage capacity and any pricing thereof is based on the third-party cloud provider's current offering, at its sole discretion. Your cloud account is subject to the third-party cloud provider's terms and conditions. Neither Canon Inc. nor Canon U.S.A., Inc. represents or warrants any third-party product, service, or feature referenced hereunder.

imagePROGRAF

SPECIFICATIONS



Print-Head
PF-04

Technology
FINE (Full-Photolithography Inkjet Nozzle Engineering)

Print Resolution (Max.)
2400 × 1200 dpi

Line Accuracy*
±0.1% or Less

Minimum Line Weight**
0.02 mm

Number of Nozzles
Matte Black: 5,120 Nozzles
Other Colors: 2,560 Nozzles per Color

Droplet Size
4 Picoliter

Nozzle Pitch (Head Resolution)
1200 dpi × Two Rows

Print-Head Swath
1.07"

Ink Type

Dye
Cyan (C), Magenta (M), Yellow (Y), Black (K)

Pigment
Matte Black (MBK)

Ink Tank
PFI-107: C, M, Y, BK, MBK

Ink Tank Capacity
Starter: 90 ml
Replacement: 130 ml

Ink Supply Method
Tubing System with Sub-Ink Tanks for Continuous Ink Supply

Nozzle Recovery System
Non-firing Nozzle Detection and Compensation

Printer Controller
L-COA Processor

Printer Memory
256 MB

Media Feed

Roll Feed
One Roll, Top-loading, Front Output

Cut Sheet
One Sheet, Top-loading, Front Output

Media Width

Roll Feed
iPF770: 10" – 36" (254 mm – 914 mm)
iPF670: 10" – 24" (254 mm – 610 mm)

Cut Sheet
iPF770: 8" – 36" (203.2 mm – 914 mm)
iPF670: 8" – 24" (203.2 mm – 610 mm)

Printable Margins

Roll Feed
All Sides: 0.12" (3 mm) or 0" for Borderless

Cut Sheet
Leading, Sides (Left and Right): 0.12" (3 mm)
Trailing: 0.91" (23 mm)

Maximum Print Length (Single Page)†

Roll Feed
59" (18 m)

Cut Sheet
63" (1.6 m)

Borderless Printing Widths (Roll Media Only)
10", B4, A3, 14", A2, 17", B2, A1, 24"
iPF770 only: B1, A0, 36"

Media Cutter
Durable Dual-blade Rotary Cutter

Media Thickness
0.07 – 0.8 mm (2.8 – 31.4 mil)

Media Core Sizes
2" and 3" Core (Adapter Included)

Maximum Roll Outer Diameter
5.9" (150 mm)

Output Media Bin
Basket

Printing Software
imagePROGRAF Printer Driver for Windows®/Mac, Printer Driver Extra Kit for Windows/Mac (Free Layout, Color imageRUNNER® Enlargement Copy (PC Only), Advanced Preview), Print Plug-in for Microsoft Office (PC only), Optimized Module for AutoCAD® for Windows, Direct Print & Share (PC Only), Status Monitor for Windows, PrintMonitor for Mac, Media Configuration Tool, PosterArtist Lite for Windows

Operating System††
Windows XP (32 bit), Server 2003 (32/64 bit), Server 2008 (32/64 bit), Server 2012 (64 bit), Windows Vista® (32/64 bit), Windows 7 (32/64 bit), Windows 8 (32/64 bit), Macintosh OS X 10.6.8 - 10.9X

Print Language
GARO (Canon Proprietary), HP-GL/2, HP RTL

Interface
USB 2.0 Hi-Speed, 10/100/1000Base-T/TX

Protocol
TCP/IP (IPv4/IPv6), IPX/SPX, AppleTalk®, SNMP (Canon MIB supported), HTTP

Acoustic Noise

Operation
iPF770: Approx. 48 dB
iPF670: Approx. 47 dB

Standby
35dB or Less

Acoustic Power
iPF770: Approx. 6.5 Bels
iPF670: Approx. 6.4 Bels

Power Supply
AC 100–240 V (50-60 Hz)

Power Consumption

Maximum
140 W or Less

Standby
5 W or Less

Power Off
1 W or Less (Executive Order Compliant)

Certifications

Electrical Safety Regulations
TUV (USA), cTUV (USA), TUV.S mark, CB certification (Others)

Electromagnetic Interface Regulations
FCC Class B (USA), IC Class B (Canada)

Environmental Certifications
ENERGY STAR® (Worldwide)
RoHS Directive

Operational Environment

Temperature
59 – 86 °F (15 – 30 °C)

Relative Humidity
10 – 80% (No Condensation)

Printer Dimensions (H × W × D) and Weight with Stand and Basket

iPF770: 42" x 51" x 34"
(ST-33: with basket open)
Weight: 139 lb. (ST-33, roll holder included, no inks, no print-heads)

iPF670: 42" x 39" x 34"
(ST-26: with basket open)
Weight: 116 lb. (ST-26, roll holder included, no inks, no print-heads)
Without stand: 20" x 39" x 27"
Weight: 95 lb.

Options

PosterArtist
iPF770: Roll Holder Set (RH2-33)
iPF670: Roll Holder Set (RH2-26)
iPF670: Stand (ST-26)

User-Replaceable Items

Ink Tank (PFI-107 MBK, BK, C, M, Y)
Print-Head (PF-04)
Maintenance Cartridge (MC-10)

* Line accuracy repeatability is guaranteed after a user performs necessary adjustment and under the same environmental conditions. Applies to media for line drawing (Plain Paper, Coated Paper, CAD Translucent Matte Film, and CAD Tracing Paper) only.

** Theoretical value based on data resolution.

† The maximum printable length varies, depending on the application, OS, and RIP used.

†† For imagePROGRAF Printer Driver. For printing from PostScript applications such as Adobe Illustrator or QuarkXPress, please use a PostScript compatible RIP package. For a list of Canon recommended RIP packages, please consult with Canon Alliance and Industry Market program list of RIP vendors at www.usa.canon.com.

Learn more about the ENERGY STAR® program at www.usa.canon.com/energystar

As an ENERGY STAR® Partner, Canon U.S.A., Inc. has qualified these models as meeting the ENERGY STAR energy efficiency criteria through an EPA recognized certification body. ENERGY STAR and the ENERGY STAR mark are registered U.S. marks. Canon, imagePROGRAF, imageRUNNER, imagePRESS, and the GENUINE logo are registered trademarks of Canon Inc. in the United States and may also be registered trademarks or trademarks in other countries. Apple, iTunes, and iPad are registered trademarks of Apple Inc. All other referenced product names and marks are trademarks of their respective owners. All printer output images are simulated. Specifications and availability subject to change without notice. Not responsible for typographical errors.
©2014 Canon U.S.A., Inc. All rights reserved.

0191W058
1214-iPF770/670-10M-LTM



1-800-OK-CANON

www.usa.canon.com

