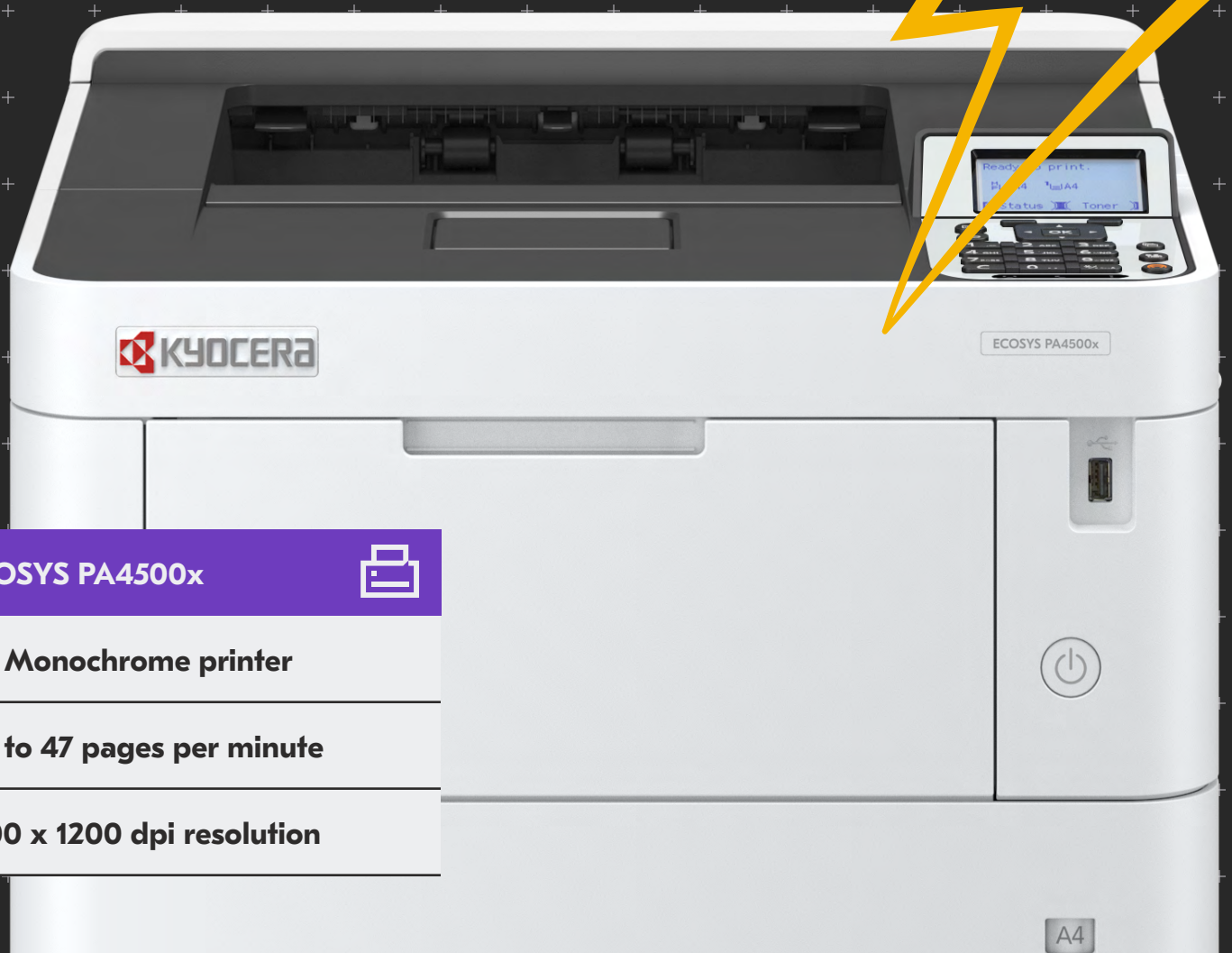


# Compact, Yet Powerful

The ECOSYS PA4500x is a powerful printer embedded with K-Level security firmware. When you combine optional hard drive memory and K-Level security firmware, these enhanced levels of protection can be integrated with these Kyocera devices. The rapid speed of up to 47 pages per minute contributes to the enhanced productivity of smaller workgroups. Thanks to its reliability, your business can operate with the peace of mind that you prints will come out perfect every time.



**ECOSYS PA4500x**



**A4 Monochrome printer**

**Up to 47 pages per minute**

**1200 x 1200 dpi resolution**

A4

## ECOSYS PA4500x

### BASIC SPECIFICATIONS

**Configuration:** Monochrome Printer  
**Pages per Minute:** Letter: 47, Legal: 38, StatementR: 23  
**Duplex Print Speed:** Letter: 23.5, Legal: 19  
**Display:** 5 Line LCD with Hard Key Control Panel and White LED backlight  
**Warm Up Time:** 16 seconds or less (Power On) & 15 seconds or less (From Sleep)  
**First Page Out Time:** 5.3 seconds or less  
**Resolution:** 600 x 600 dpi, 300 x 300 dpi;  
Fine1200 (1200 x 1200 dpi) and Fast1200 (1800 x 600 dpi) Interpolated Resolution  
**Memory:** Std: 512MB, Max: 2.5GB  
**Duplex:** Standard Stackless Duplex Supports Statement to Legal (5.5" x 8.5" - 8.5" x 14"), 16 lb. Bond - 67 lb. Index (60 - 120gsm)  
**Dimensions / Weight:** 15.35" W x 16.38" D x 12.13" H / 32.19 lbs.  
**Maximum Monthly Duty Cycle:** 150,000 Pages per Month

### POWER CONSUMPTION

**Electrical Requirements:** 120V: 60Hz, 10A; 220-240V, 50/60Hz, 5.6A  
**Typical Electricity Consumption (TEC):**  
120V: 0.62 kWh/week; 220-240V: 0.59 kWh/week  
**Energy Star® Compliant**  
**Maximum (including Options):** 120V: 1,165W; 220-240V: 1,234W  
**Printing:** 120V: 620.2W; 220-240V: 605.5W  
**Ready Mode:** 120V: 8.3W; 220-240V: 8.4W  
**Sleep Mode:** 120V: 0.5W; 220-240V: 0.5W  
**Power Off:** 120V: 0.1W; 220-240V: 0.1W

### PRINTER SPECIFICATIONS

**Standard Controller:** ARM Cortex-A53 Dual core 1.4GHz  
**PDLs / Emulations:** PRESCRIBE, PCL6 (PCL XL / PCL 5c), KPDL3 (PostScript3 compatible), AES, PDF Direct Print, XPS/ Open XPS (TIFF/JPEG Direct Print)  
**Fonts:** Outline Fonts 93 (PCL 6/KPDL3), 4 fonts (Calibri), 4 fonts (Cambria), Bitmap (1 Font / 79 Processed Outline Fonts)  
**Barcodes:** 1-Dimensional: 45 Type; 2-Dimensional: PDF417 1 Type  
**Windows OS Compatibility:** Windows 8.1, Windows 10 (32/64/arm64), Windows 11 (32/64/arm64), Windows Server 2012/R2, 2016, 2019.

**MAC OS Compatibility:** Mac OS X 10.5 or greater  
**Linux OS Compatibility:** Linux Distro version: Debian 11, Ubuntu 20.04, RHEL 8, CentOS Linux 8, Fedora 34, 35, OpenSUSE 15.3  
**Interface:** 10BASE-T/100BASE-TX/1000BASE-T(TCP/IP, NetBEUI), 1 USB 2.0 & 2 USB 2.0 Host (Hi-Speed USB), 1 Expansion Slot; IB-37/38/51 Options.  
**Network Print and Supported Protocols:** TCP/IP, FTP, LPR, Port9100, NetBEUI, Apple Bonjour, IPP/1.0 (Some 1.1 functions are also supported), IPP/2.0, WSD Print, POP3  
**Mobile Printing:** KYOCERA Mobile Print, KYOCERA MyPanel, Apple AirPrint®, Mopria®, and Wi-Fi Direct<sup>3</sup>  
**Drivers:** KX Driver, PCL Mini Driver, KPDL Mini Driver, WIA Driver, MAC Driver, Linux Driver  
**Utilities:** KYOCERA Direct Print, KYOCERA Mobile Print, KYOCERA MyPanel, KYOCERA Print Center, KYOCERA Net Viewer, KYOCERA Device Manager, Quick Network Setup, and Maintenance Menu. KFS Utilities include: KFS Mobile (Android/iOS), NetGateway, Data Collection Tool, Device Registration Diagnostic Tool  
**Additional Print Features:** EcoPrint; N-Up Printing, Private Print; Proof and Hold; Quick Copy<sup>1</sup> and Job Storage<sup>1</sup>  
**Job Management:** Job Accounting, 100 Department Codes

### SECURITY SPECIFICATIONS

Local Authentication, Network Authentication, Encryption Communication (IPsec, HTTPS, LDAP over TLS, SNMPv3, SIEM/Syslog, SMTP over TLS, POP over TLS), Optional TPM chipset (Trusted Platform Module), Certificates SCEP, OCSP/CRL (CRL: W/option Memory), ECDSA, Secure Boot, Run Time Integrity Check, Support for FIPS 140-3 (option SSD), Common Criteria (ISO/IEC-15408/EAL2 W/SSD)

### PAPER SUPPLY

**Standard Paper Sources:** Single 500 Sheet Drawer, 100 Sheet Multipurpose Tray  
**Standard / Maximum Paper Sources:** 2 / 6 Including Multipurpose Tray  
Standard / Maximum Paper Capacity: 600 Sheets / 2,600 Sheets  
**Paper Size:** Statement to Legal (5.5" x 8.5", 8.5" x 14"), Custom; MPT Only: Envelope, Banner  
**Paper Weight:** Standard Drawer: 16 lb. Bond - 67 lb. Index (60 - 120gsm); MTP: 16 lb. Bond - 120 lb. Index (60 - 220gsm)  
**Standard Output Tray Capacity:** 250 Sheets, Face Down

**Input Materials:** Standard: Plain Paper, Bond Paper, Recycled Paper, StatementR, Custom; MPT: Plain Paper, Bond Paper, Labels, Envelopes, Letter Head, PrePrinted, Cardstock, Thin Paper, Thick Paper, Banner

### PAPER HANDLING OPTIONS

**PF-3110 PAPER FEEDER**  
**Paper Capacity:** 500 Sheets x 4 (80gsm)  
**Paper Size:** Statement to Legal (5.5" x 11" - 8.5" x 14"), 16 - 32 lb. Bond, Envelopes, Custom  
**Dimensions / Weight:** 14.9" W x 16.1" D x 4.8" H / 8.4 lbs.

**PF-3100 LARGE CAPACITY CASSETTE**  
**Paper Capacity:** 2,000 Sheets (75gsm)<sup>2</sup>  
**Paper Size:** Statement to Letter (5.5" x 8.5" - 8.5" x 11"), Envelopes, Custom  
**Dimensions / Weight:** 13.6" W x 16.6" D x 14.6" H / 16.5 lbs.

### ADDITIONAL OPTIONS

**Print Management:** ThinPrint (UG-33)  
**Security:** Standard Data Security Overwrite/Encryption with SSD  
**SD Card:** 16, 32 GB  
**SSD:** HD-17: 64 GB SSD / HD-18: 256 GB SSD / HD-19: 512 GB SSD  
**Wireless LAN:** IB-37, IB-38, and IB-51 (does not support HyPAS or KFS).  
**Additional NIC:** IB-50 Gigabit NIC  
**Optional Interface:** IB-32B (Parallel Interface)  
**Attachment Kit:** PB-325 (Base Unit for the PF-3100)  
**Optional Memory:** SD-144-1GB (DDR3), SD-144-2GB (DDR3)  
**Optional:** Adjustable Stand

### NOTE:

<sup>1</sup>Requires Optional SD Card, HD-17, HD-18, or HD-19  
<sup>2</sup>Requires a PB-325  
<sup>3</sup>Requires Optional IB-37, IB-38

Specifications and design are subject to change without notice. For the latest on connectivity visit [kyoceradocumentsolutions.us](http://kyoceradocumentsolutions.us). ECOSYS, PRESCRIBE, Kyocera Net Manager, Kyocera Net Viewer, Kyocera Device Manager, PDF Direct Print, Command Center RX, and KX Driver are trademarks of The Kyocera Companies. Mac OS and AirPrint are trademarks of Apple, Inc. Mopria is a trademark of Mopria Alliance, Inc. Windows is a trademark of Microsoft, Inc. All other trademarks are the property of their respective owners.



Kyocera Document Solutions Partner

KYOCERA Document Solutions America  
225 Sand Road, PO Box 40008  
Fairfield, New Jersey 07004-0008, USA  
Tel: 973-808-8444



[kyoceradocumentsolutions.us](http://kyoceradocumentsolutions.us)

Kyocera Document Solutions does not warrant that any specifications mentioned will be error-free. Specifications are subject to change without notice. Information is correct at time of going to press. All other brand and product names may be registered trademarks or trademarks of their respective holders and are hereby acknowledged.  
©2023 KYOCERA Document Solutions America, Inc.